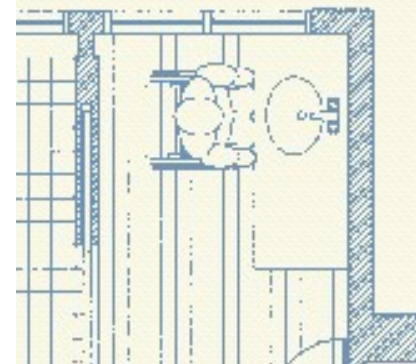


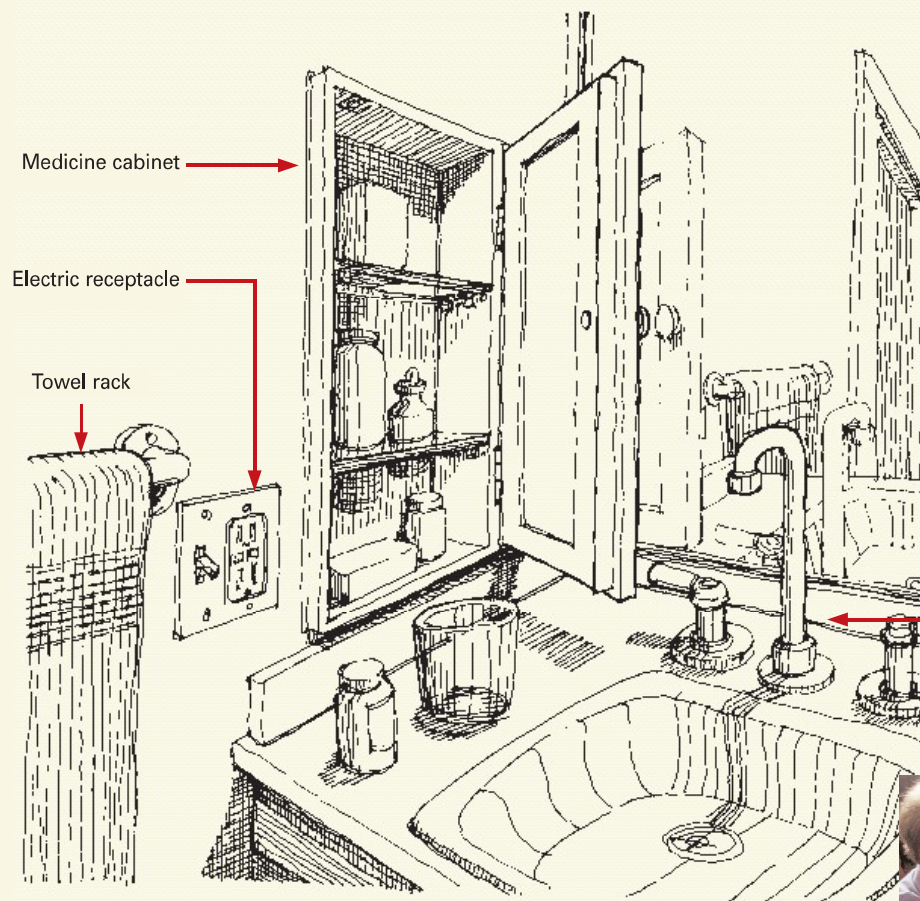


6

Plumbing Fixtures for
Your Bathroom



Plumbing Fixtures for Your Bathroom



(left) The wing wall at a vanity is a useful location for the installation of electric outlets and switches, towel bars, and medicine cabinets. The vanity top can be used for temporary storage of soap, shampoo, pills and medications, and grooming accessories like hair dryers and brushes.

Faucet and spout

Vanity Wing Wall

(inset) Sink faucets should be easy to operate without fine hand function. A tall filler spout is less of an obstruction to basin access and makes it easier to fill pitchers or other tall vessels.

